

# Security+Plus™ Benefits

## Convenience

Nissan Security+Plus™ Maintenance Plans are honored at all participating Nissan retailers in Canada or the United States and feature a zero deductible.

## Factory Trained Technicians

A Nissan-trained technician knows your Nissan best and can identify potential problems during regular maintenance that other service providers might miss.

## Genuine Nissan Parts\*

Ask for Genuine Nissan Parts, which help to maintain your vehicle's reliability and value.

## Enhanced Resale Value

Properly maintained vehicles typically offer higher resale value.

## Transferable†

If you sell your Nissan, the plan is transferable to the new owner thereby helping to boost resale value.

## Price Protection

Pre-payment of maintenance ensures that you're protected from future parts and service price increases.

## Affordable Flexibility

With a variety of time and mileage options you can choose the Maintenance Plan that suits your needs.

## Fuel Savings

A properly maintained vehicle will consume less fuel.

## Peace of Mind

Tire road hazard protection adds security to your driving experience.

\* Genuine Nissan new/remanufactured or Nissan-approved parts will be utilized for all covered replacements.

† For details, please refer to the Security+Plus™ Prepaid Maintenance Plan agreement or contact your local Nissan dealer.

# Why Security+Plus™ ?

As a condition of your new vehicle limited warranty, you are responsible for properly using, maintaining and caring for your vehicle as outlined in your OWNER'S MANUAL, and Nissan's SERVICE & MAINTENANCE GUIDE, and maintaining copies of all maintenance records & receipts for review by Nissan. Failure to do so is likely to result in the denial of warranty coverage.

Evidence of the performance of the required maintenance should be kept and presented as proof of such maintenance in connection with related warranty repairs.

## Protection against rising inflation

Lock in lower costs by choosing prepaid maintenance.

## Protection against rising fuel costs

Regular maintenance helps your vehicle run at its peak efficiency.

## Protection against loss of warranty coverage

Failure to perform scheduled maintenance with Nissan Genuine Parts may void your factory warranty or any extended service contract purchased. Further proper maintenance is a requirement of all lease agreements.



## YOUR NISSAN PREPAID MAINTENANCE PLAN (PMP) AGREEMENT TERM

The seller of this Agreement is Nissan Canada Extended Services Inc. The address is 5290 Orbitor Drive, Mississauga, Ontario L4W 4Z5.

This Agreement shall commence on the Plan Purchase Date and will expire the earlier of either the date on which the maximum number of service visits have been reached, the Plan Expiration Date or when the Plan Expiration Kilometers has been reached. It is understood that we will only pay for those services outlined in the Agreement Booklet provided to you by the selling Dealer and is fully described in the Service and Maintenance Guide specific to your Vehicle, which has been provided with your Vehicle.

This Plan is designed to meet all requirements and specifications necessary to maintain the new vehicle Limited Warranty while operating the vehicle in Canada. It is important to recognize that during your scheduled inspections under this Plan our Dealers may recommend additional maintenance items not covered under this plan and as such it will be the responsibility of the Plan Holder to compensate the Dealer if the additional maintenance is purchased. These items could include, but are not limited to: Brakes, Brake Service, Tires, Wheels, Wipers, Lights and Bulbs, Engine Drive belts, Radiator Cap, Transfer Case Oil, Transmission Fluid, Differential Fluid, and Engine Coolant.



Innovation  
that excites

Note: The contents provided in this brochure are only a summary of certain terms and conditions of the agreement/plan. Please refer the actual agreement/policy for complete details of coverage and exclusions. The terms and conditions of the agreement/policy shall supersede the contents provided in this brochure.

Nissan Canada Extended Services Inc.  
5290 Orbitor Drive, Mississauga, Ontario L4W 4Z5.

99999-PMP5BRN



# Security+Plus™

PREPAID MAINTENANCE PLAN



# PLATINUM

# Security+Plus™

PREPAID MAINTENANCE PLAN

Customizing your new Nissan  
Security+Plus™ Prepaid Maintenance  
Plan is as easy as **One, Two, Three...**



**Rental vehicle assistance**  
(Included with PLATINUM PLANS only)

We will reimburse the costs paid to a recognized rental establishment to rent an alternate Vehicle to a maximum of \$45.00 per day during the identified visits. For exact details on which visits provide this benefit refer to the Agreement Booklet provided to you by the Dealer upon purchase of a prepaid maintenance plan.



**Tire road hazard coverage**  
(Included with PLATINUM PLANS only)

Tire Road Hazard Coverage will cover the factory installed tires against damage from road hazards for up to 36 months from the In Service Date, or up to 50,000 kilometers, or its useful life, whichever occurs first.



## STEP 1

Choose the plan that offers the best level of protection for your new Nissan.



### PLATINUM

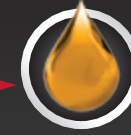
OIL CHANGE & TIRE ROTATION

## STEP 2

Choose from the high quality lubricants available to keep your new vehicle running its best.



Conventional Oil



Nissan Genuine Ester Oil



Super Synthetic

## STEP 3

Choose the duration of care for your new vehicle and visit any participating Nissan Dealer to follow the Prepaid Maintenance Plan schedule.

To decide which duration to choose start by determining which dimension (months or kilometers) would most apply to your driving habits. For example if you drive less than 16,000 km a year, select a plan based on months. Like wise if you drive more than 16,000 km a year, select a plan based on kilometers.

Months: 12 months (1 year) to 84 months (7 years)	Year 1		Year 2		Year 3		Year 4		Year 5		Year 6		Year 7	
	6	12	18	24	30	36	42	48	54	60	66	72	78	84
Kilometers: from 16,000 km to 112,000 km	8,000	16,000	24,000	32,000	40,000	48,000	56,000	64,000	72,000	80,000	88,000	96,000	104,000	112,000
Service visit	1	2	3	4	5	6	7	8	9	10	11	12	13	14
<b>Included Services &amp; Replacements</b>														
Engine oil and filter	✓	✓	✓	✓	✓	✓	✓	✓	✓	✓	✓	✓	✓	✓
Replace brake fluid		✓		✓		✓		✓		✓		✓		✓
Replace engine air filter						✓		✓		✓		✓		✓
Replace In-cabin microfilter						✓		✓		✓		✓		✓
Rotate Tires (except all 370Z)	✓	✓	✓	✓	✓	✓	✓	✓	✓	✓	✓	✓	✓	✓
Replace manual transmission oil (Frontier only)								✓		✓		✓		✓
<b>Included Inspections</b>														
Automatic transmission/CVT fluid		✓		✓		✓		✓		✓		✓		✓
Axle & suspension parts	✓	✓	✓	✓	✓	✓	✓	✓	✓	✓	✓	✓	✓	✓
Brake lines & cables		✓		✓		✓		✓		✓		✓		✓
Brake pads, rotors, drums & linings	✓	✓	✓	✓	✓	✓	✓	✓	✓	✓	✓	✓	✓	✓
Differential oil		✓		✓		✓		✓		✓		✓		✓
Drive shaft boots	✓	✓	✓	✓	✓	✓	✓	✓	✓	✓	✓	✓	✓	✓
Exhaust system	✓	✓	✓	✓	✓	✓	✓	✓	✓	✓	✓	✓	✓	✓
Engine drive belts		✓		✓		✓		✓		✓		✓		✓
Front suspension ball joints	✓	✓	✓	✓	✓	✓	✓	✓	✓	✓	✓	✓	✓	✓
Fuel lines/connections				✓		✓		✓		✓		✓		✓
Fuel tank vapor vent system hoses				✓		✓		✓		✓		✓		✓
Manual transmission oil		✓		✓		✓		✓		✓		✓		✓
Propeller shaft (4WD/AWD/RWD)	✓	✓	✓	✓	✓	✓	✓	✓	✓	✓	✓	✓	✓	✓
Steering gear and linkage	✓	✓	✓	✓	✓	✓	✓	✓	✓	✓	✓	✓	✓	✓
Steering linkage ball joints	✓	✓	✓	✓	✓	✓	✓	✓	✓	✓	✓	✓	✓	✓
Transfer case oil (4WD/AWD)		✓		✓		✓		✓		✓		✓		✓
Rental Vehicle		🚗		🚗		🚗		🚗		🚗		🚗		🚗

Months: 12 months (1 year) to 84 months (7 years)	Year 1		Year 2		Year 3		Year 4		Year 5		Year 6		Year 7	
	6	12	18	24	30	36	42	48	54	60	66	72	78	84
Kilometers: from 16,000 km to 112,000 km*	8,000	16,000	24,000	32,000	40,000	48,000	56,000	64,000	72,000	80,000	88,000	96,000	104,000	112,000
Service visit	1	2	3	4	5	6	7	8	9	10	11	12	13	14
<b>Included Services &amp; Replacements</b>														
Engine oil and filter	✓	✓	✓	✓	✓	✓	✓	✓	✓	✓	✓	✓	✓	✓
Rotate Tires (except all 370Z)	✓	✓	✓	✓	✓	✓	✓	✓	✓	✓	✓	✓	✓	✓

\* The Plan will start from the kilometers on your vehicle at time of purchase for oil change & tire rotation plans only. The subsequent maintenance visits will be performed at your starting kilometers plus 8,000km or 6 months whichever occurs first.