



## Quick Start Guide

The i-HDS software is full of functions and features all while giving the user a layout somewhat familiar to the legacy HDS software. The second generation of HDS supported us well for a very long time. After 13 years in action, a new generation tool was designed to work on new generation vehicles. i-HDS supports vehicle models starting from the 2017 model year, for all Full Model Changes and new models.

This document does not review all i-HDS features but will give you an overview of the changes and features of the i-HDS software. Let's get started!

### Overview:

For Hardware, i-HDS and HDS is officially supported with the Honda Antares Capsule (HAC). More details on how to select an interface are below.

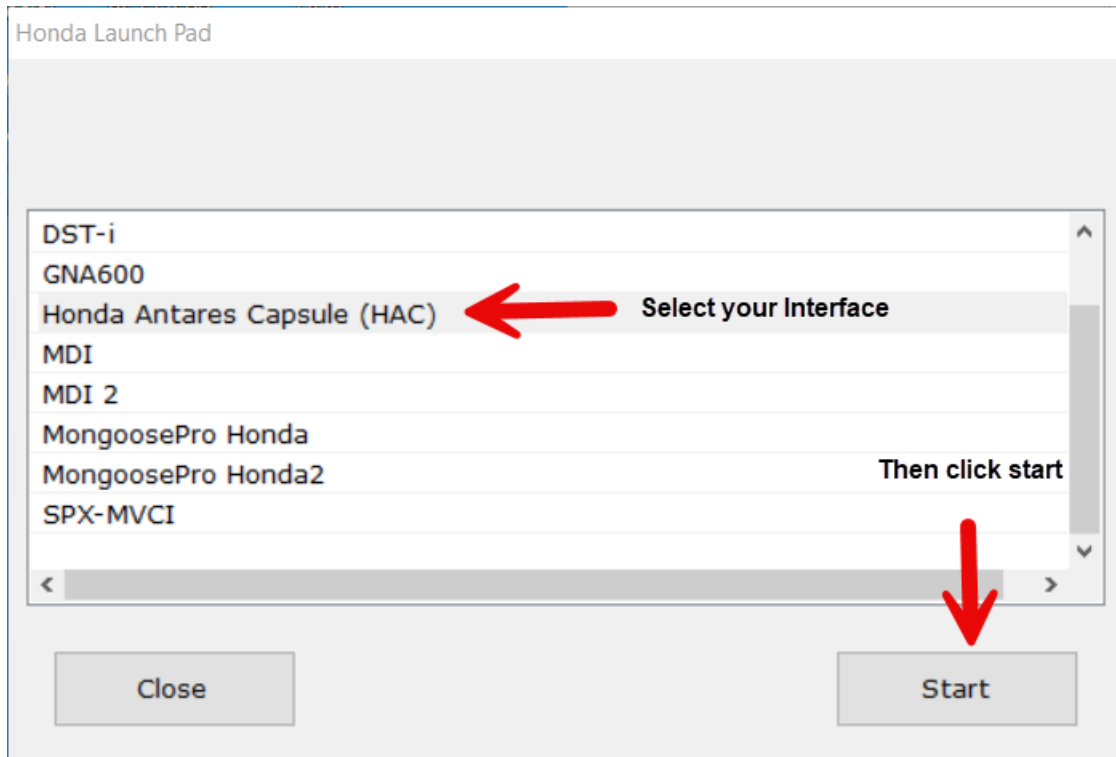
For software, i-HDS and HDS are auto-selected depending on the model of the connected vehicle, when activating the diagnostic software. There is no need to memorize which software to launch, the "Selector" does all the work for you! Details below...



## Feature 1 – The Honda Launch Pad

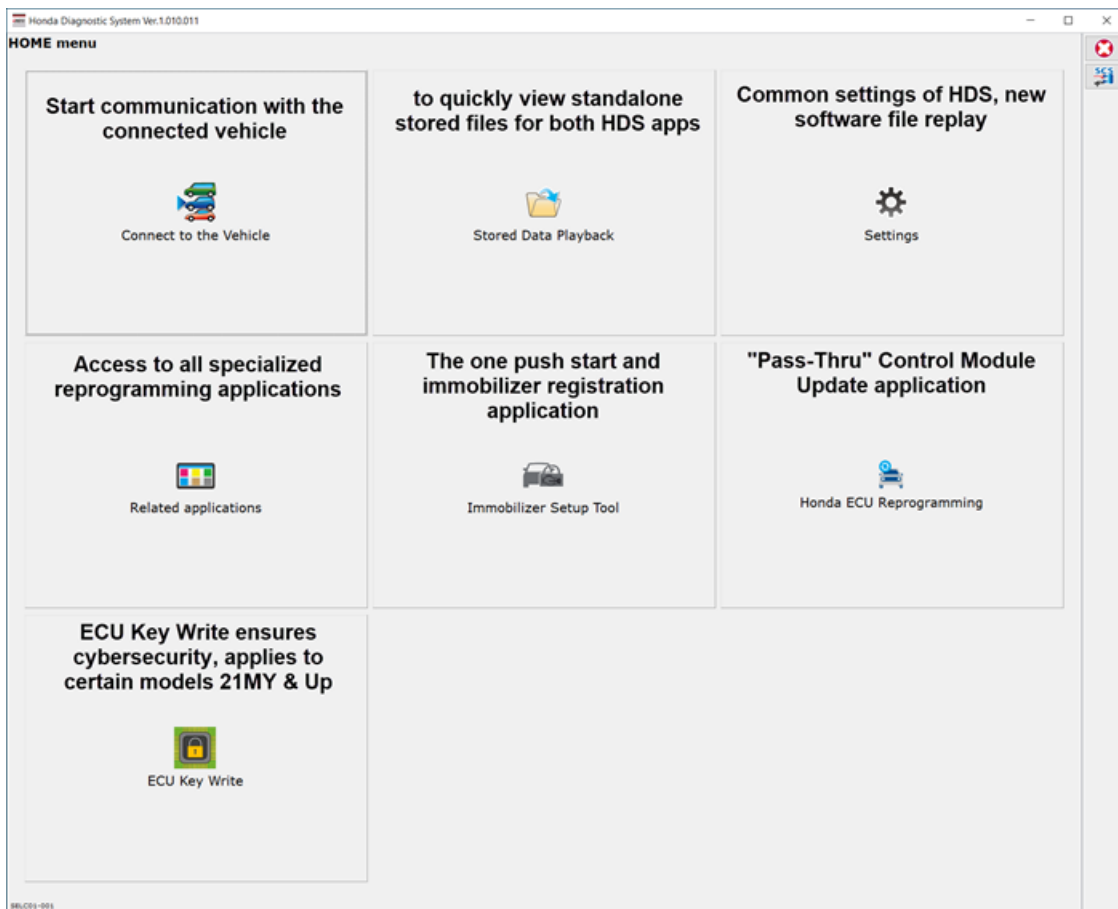
The first thing you will notice is the “Honda Launch Pad.” The Honda Launch Pad was created to help you select the correct interface with every use of the software suite.

**Note:** Although present, the MongoosePro Honda and GNA600 interfaces should **not** be used for diagnostics with the i-HDS and HDS software.



## Feature 2 – Home Menu

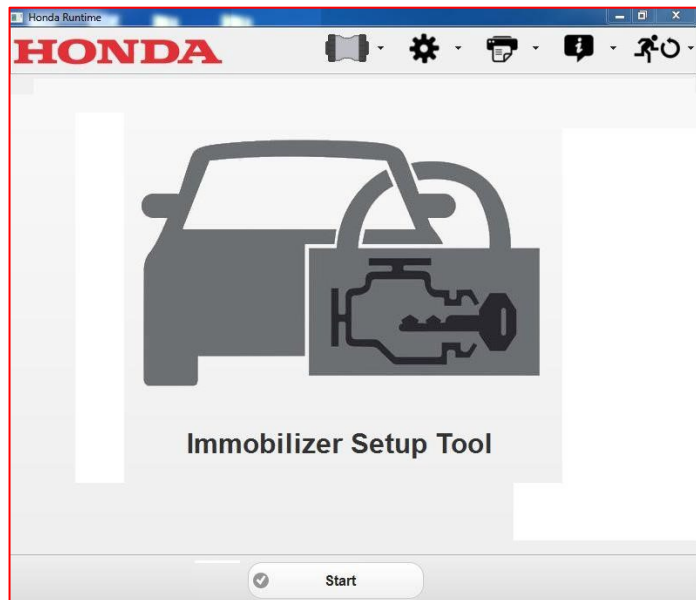
The Home Menu was designed to be your diagnostic dashboard and your friend. This menu is the start screen of the diagnostic system, and the starting point for both the legacy HDS software and i-HDS. To reach the correct software, the user clicks on the “Connect to the Vehicle” button. From there, the software uses VIN sensing to determine whether to launch iHDS or HDS.

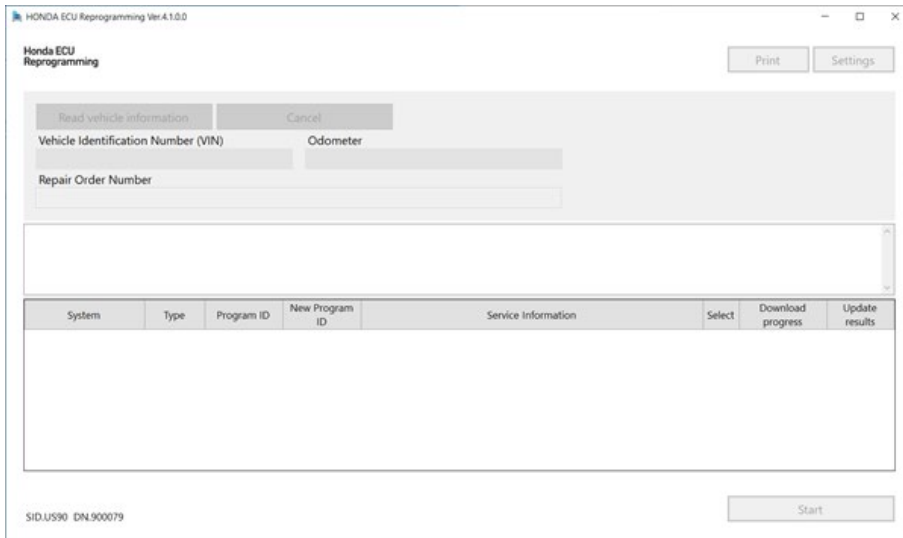


### Features 3 – Applications

The immobilizer and key registration functionalities have been disabled from the HDS software and put into the “Immobilizer Setup Tool.”

This application was designed to make registration more accessible to the user as it was one of the most frequently used functions of HDS.

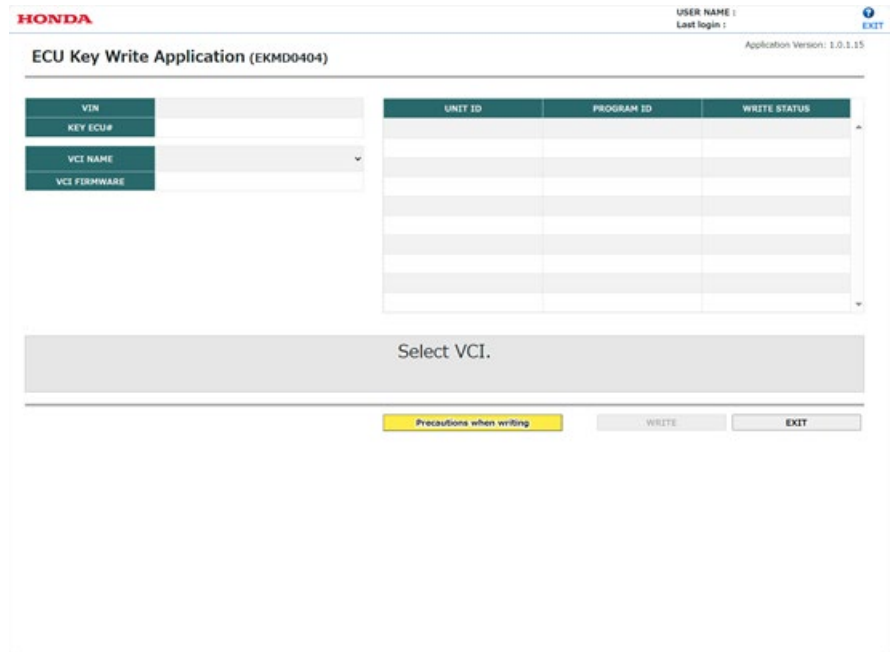




A "Pass-Thru" method is used with "ECU Reprogramming" and the HAC to update control modules. With the release of i-HDS, the pass-thru method applies to all Honda/Acura models.

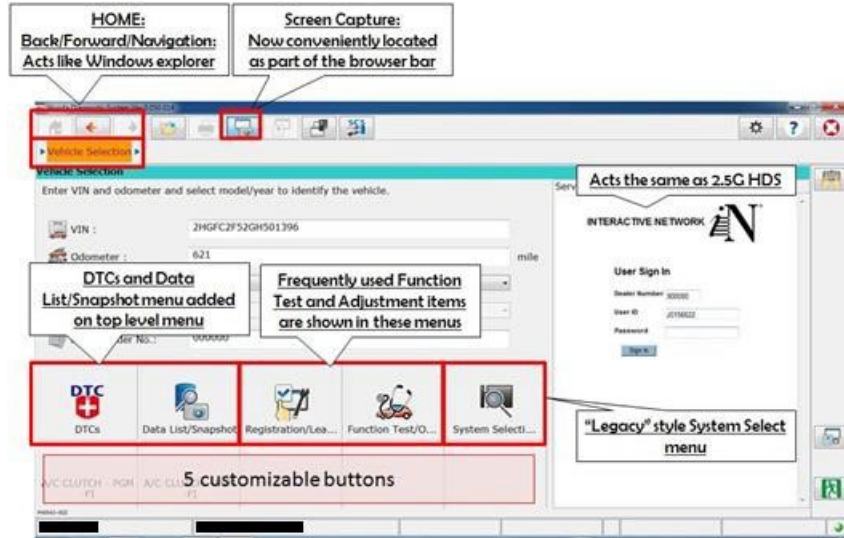
This application enhances usability and documentation for dealers, and more importantly, allows American Honda to deliver the latest calibration files to the i-HDS PC in a much easier, and less time-consuming method.

Modern vehicles have more electronic control units (ECUs), raising cybersecurity concerns. To address this, we're introducing ECU Key Write in the i-HDS. When installing or replacing certain ECUs, you must enter a unique security key using the app. Without it, the ECU will only function in limp mode and trigger a DTC.



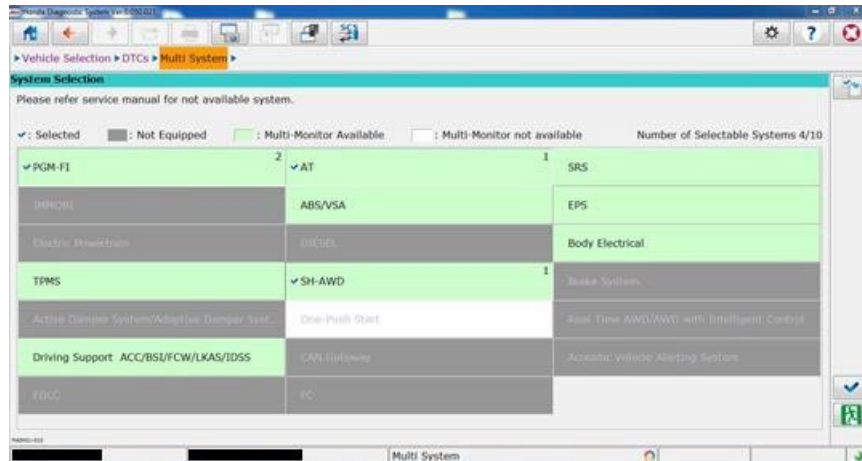
## Features 5 – i-HDS Main Menu

On the i-HDS vehicle selection menu, there are a number of features. A few are outlined in this document, but feel free to navigate and explore i-HDS to find everything.



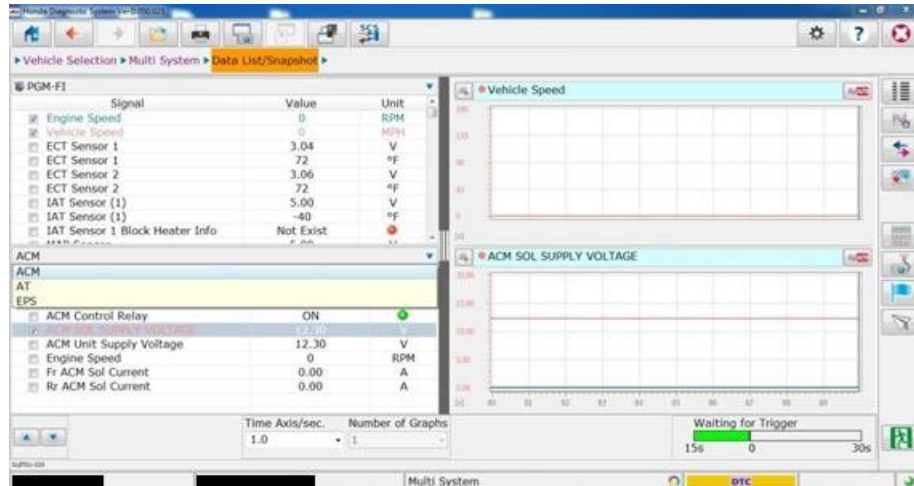
## Highlights:

- Hovering over buttons will tell you what the button does.
- Equipped systems are activated based on the communication between i-HDS and the vehicle's equipped systems. (For example, if a vehicle does not have SH-AWD, then the i-HDS system selection menu will have that system grayed out and it will not be selectable).
- Multiple systems can be selected and viewed at the same time for the DTC monitor, Data List, and Snapshot.



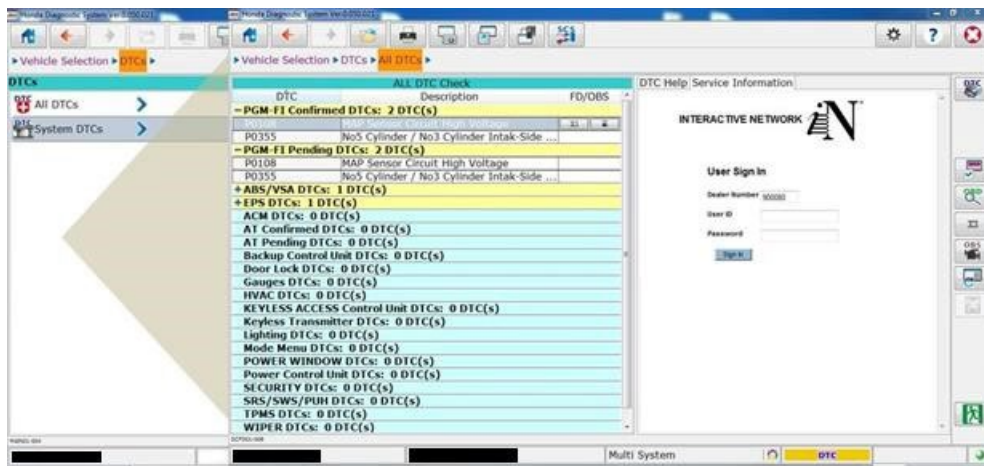
## Highlights:

- Small blue arrows normally mean there is drop down menu available.
- Technicians can display line graphs for two systems on the same page.
- Units can be changed in the Data List page.
- The size of the Data List window is adjustable by dragging the divider.
- Snapshot pre-trigger begins automatically collecting upon entering a Data List.



## Highlights:

- All DTC Check speed is down to about 20 seconds (a 90% improvement).
- During the All DTC check, the results fill the table, allowing the tech to see the progress.
- The systems with DTCs are shown on the top of DTC list.
- Readiness Monitors and OBD Status is located on the All DTC Check Screen.
- Easy access to Freeze Data and On-Board Snapshot right on the DTC monitor.

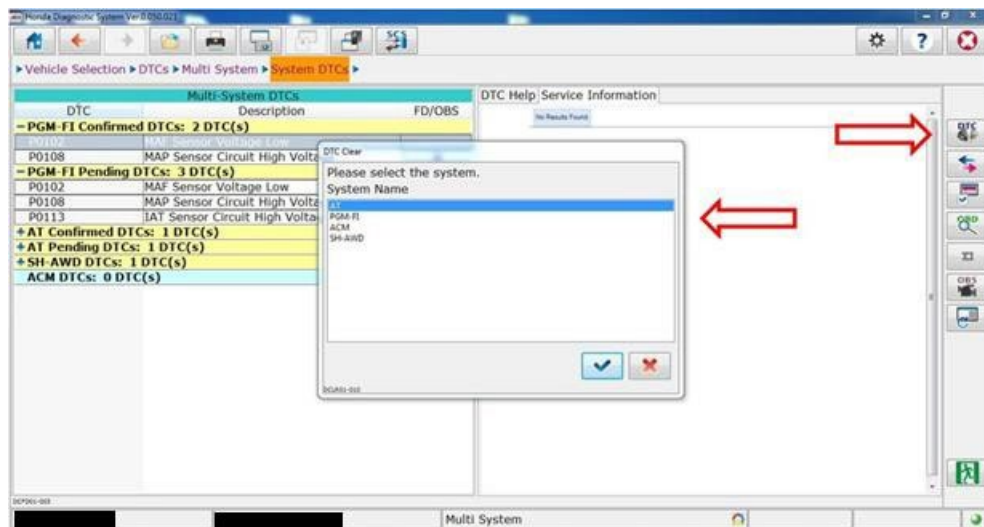


## Features 5 – Clearing DTCs

Clearing DTCs is also much quicker. DTCs can be cleared by system(s) or all at once. To clear by system, first click the "System DTCs" button on the DTCs menu screen, up to 10 systems can be selected at the same time. Clicking the clear DTC button on the right-hand side will open the system selection window. After choosing your system, i-HDS will take you straight to the clear DTC prompt.

Note: When clearing all DTCs at once, some DTCs may not clear during the first attempt and will require another all DTC clear.

Note<sup>2</sup>: This feature is limited to i-HDS and vehicles that are scanned in i-HDS. The legacy HDS software does not have this feature.



## Summary:

i-HDS is designed to be simple and user friendly. With built-in help and explanations of buttons within the software, most of the time all you need to do is hover over a button and read what it does!